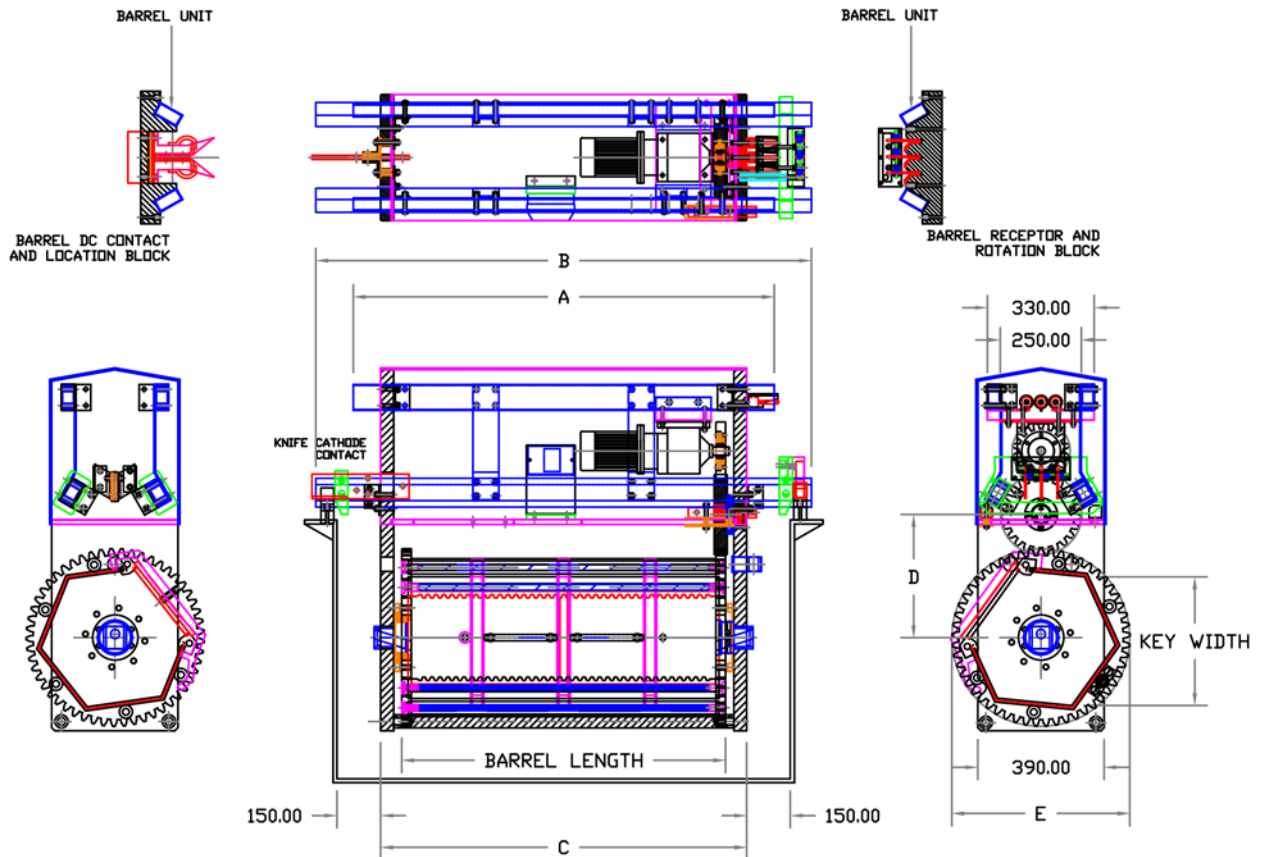


MODEL	KEY WIDTH	BARREL LENGTH	A	B	C	D	E	F
							BARREL DIAMETER	VOLUME (LITRES)
300-6	600	900	1130	730	325	470	44	
	800	1100	1330	930			58	
	1000	1300	1530	1130			73	
350-6	600	900	1130	730	340	500	58	
	800	1100	1330	930			77	
	1000	1300	1530	1130			96	
400-6	800	1100	1330	930	365	550	98	
	1000	1300	1530	1130			124	
	1200	1500	1730	1330			150	
420-6	1000	1300	1530	1130	380	580	140	
	1200	1500	1730	1330			170	
	1400	1700	1930	1530			200	
450-6	1000	1300	1530	1130	400	650	164	
	1200	1500	1730	1330			198	
	1400	1700	1930	1530			233	
430-7	1000	1300	1530	1130	380	580	146	
	1200	1500	1730	1330			177	
	1400	1700	1930	1530			208	
490-7	1000	1300	1530	1130	410	640	188	
	1200	1500	1730	1330			228	
	1400	1700	1930	1530			268	



EAGLE ENGINEERING (TELFORD) LTD
 UNIT D3, HAYBROOK IND EST, HALESFIELD 9
 TELFORD, TF7 4DW, UNITED KINGDOM
 TEL: +44 (0) 1952 586478
 FAX: +44 (0) 1952 586252

THIS DRAWING IS THE SOLE PROPERTY OF EAGLE ENGINEERING (TELFORD) LTD AND MUST NOT BE WHOLLY OR PARTLY REPRODUCED WITHOUT PERMISSION

EAGLE-MOTORISED BARREL UNIT

STANDARD BARREL RANGE